

# Artelon®

## Helps the body to heal

*Thousands of patients have received medical treatment with devices made of Artelon®, a unique biomaterial that acts as support for healing tissue. Artelon® can be designed to provide different physical properties and currently offers clinical solutions with three restoration concepts.*

### Our three concepts

In clinical studies with up to 10 years of follow-up, excellent biocompatibility has been demonstrated in musculoskeletal tissues such as bone, cartilage and ligaments.



Resurfacing

The Artelon® resurfacing concept is a tissue-preserving method for retaining the anatomy and regaining several joint functions in hand and foot.



Reinforcement

The Artelon® Tissue Reinforcement products strengthen weak or repaired soft tissue and serve as a scaffold for tissue ingrowth and remodeling. Artelon® Tissue Reinforcement has been used successfully to reinforce the rotator cuff tendons, Achilles tendon, spring ligament etc. and in doing so leverage clinical outcome.



Replenishment

Artelon® assists the building of new tissue by supporting the volume and providing a scaffold for tissue ingrowth. Artelon® has been used in odontological applications as in the treatment of periodontal and periimplant defects and also in sinus lift procedures.

### Tissue friendly

- Minimal risk of inflammatory reactions
- Minimal encapsulation
- Ten years of clinical experience

### Long-term support

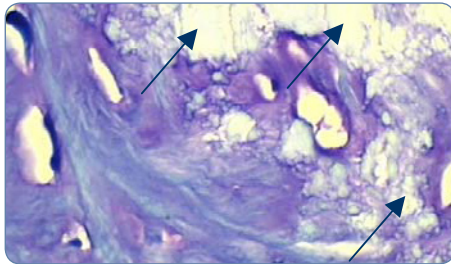
- Host tissue ingrowth and integration
- Elastic
- Predictable degradation profile
- 50% of tensile strength remaining after four years

### Safety

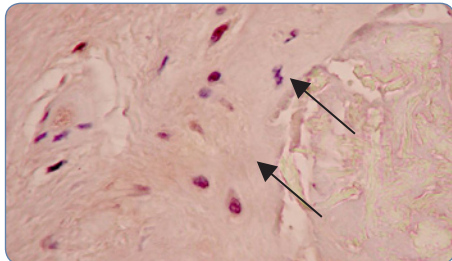
- Synthetic
- Eliminates the risk of disease transmission by donor tissue

## Biocompatible in hard and soft tissue

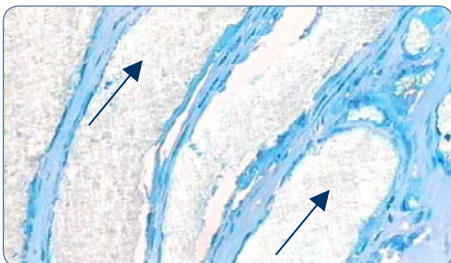
Human studies have revealed excellent biocompatibility between host tissue and Artelon® in different indications. Arrows point out the integrated Artelon® in a number of biopsies after treatment.



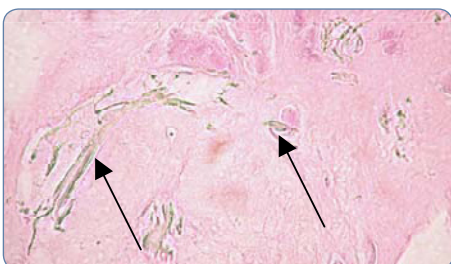
Biopsy showing excellent integration of the Artelon® biomaterial in the surrounding host bone without signs of encapsulation. Toluidine blue stain, six months of implantation, Artelon® CMC Spacer.



Artelon® in close contact with collagen II expressed by chondrocytes. Safranin-O stain, three months of implantation, Artelon® CMC Spacer.



Orientation of fibroblasts and collagen parallel to the Artelon® fibers, in the direction of the tensional load. Toluidine blue stain, 33 months of implantation, Artelon® Augmentation Device ACL.



61 months after implantation the degraded Artelon® is well incorporated in the human ligament tissue. Hematoxylineosin stain, Artelon® Augmentation Device ACL.

## Contact us

Artimplant AB, Hulda Mellgrens gata 5, SE-421 32 Västra Frölunda, Sweden  
Phone +46 31 746 56 00, Fax +46 31 746 56 60, [market@artimplant.com](mailto:market@artimplant.com)  
[www.artimplant.com](http://www.artimplant.com)